

# 1 Course Blind Nail

Hurricane Nailing Instructions  
For 7 1/8" & 5.3" exposure panels



*In the event Cedar Valley published application instructions conflict or contradict local building codes, please call the factory for clarification. If no local codes exist, refer to the 2003 I.C.C. residential building codes and these instructions for guidelines.*

## FIRST DETERMINE CORNER TYPE:

With Flush-mounting corners or corner board, install corner first. Double wrap building corners with moisture barrier. Attach corners using one **8D** Maze brand ring shank siding nail per corner side, 1.5" down from top edge, centered on each side. Apply the 4 marked corner units provided in order A,B,C,D (repeating). Start with any piece but retain the order or the "Boston Weave" will be off. Caulk corner plywood edges well. Trim panel end and push against caulked corner edge. Nail panel as per instructions below. (No starter course is needed.)

With Add-on corners, install all panels first, positioning so that panel ends are flush with corner without overlap. (Panel ends do not need to be trimmed.) Nail panel as per instructions below. Apply corners using one nail per corner side, 1" down from top course only. Add-on corners require starter pieces made on-site from individual shingles. Apply approved building paper under panels as per national or local code requirements. Double wrap building corners.

## PANEL APPLICATION:

Plan panel layout from lowest building corner after determining corner style to be used. **Panels must be applied directly over nailable shear sheathing applied over studs, 16" O.C.** A code approved building paper, must be applied directly behind the panels. Panels must span at least one stud spacing and vertical end joints must be staggered to join at studs. Horizontal scribed guidelines on Even Buttline panels enable proper alignment of succeeding panels without measuring or leveling every panel. For Staggered buttline panels chalk a horizontal measure line on the wall or use level to ensure proper alignment.

*NOTE: Panels do not meet shear requirements!*

## NAILING INSTRUCTIONS:

Use one **Maze** brand #S-227-A (*galvanized or stainless steel*) ring shank siding nail every stud (16" O.C.). Nail the panels 1.5" to 2" down from the top **STARTING** 1/2 inch in from one edge and working across the panel. Never nail from both edges towards the middle. Each nail **MUST** be driven through the shear into the 2X4 stud or a second nail must be added. Nail head should be flush with the surface of the panel. There is no need to nail other areas unless the panel has been cut horizontally or diagonally (for window, door, gable, etc.), then the tops of each cut shingle must be restapled at the corners or secured with molding. Panel ends have to join on studs or rafters, and the nails holding panels must be driven into studs!  
**Do Not Overdrive Nails!**

## Flush 90 Corners



## Add-On 90 Corners

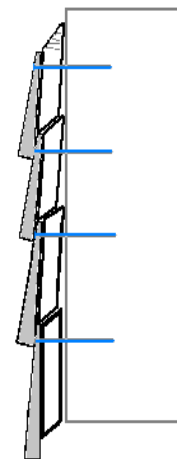
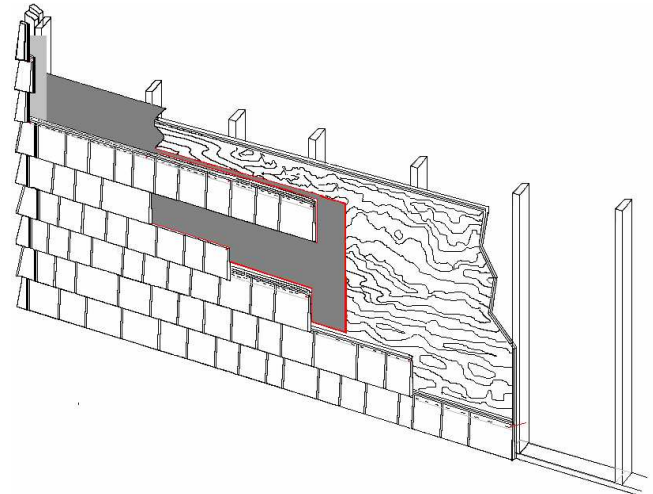
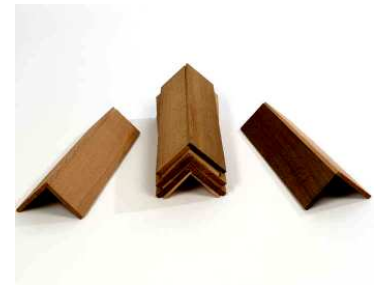


Figure 2

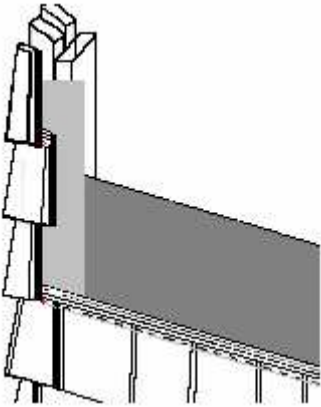
  
**CEDAR VALLEY**  
Handcrafted Shingle Panels

# 1 Course Blind Nail

Hurricane Nailing Instructions  
For 7 1/8" & 5.3" exposure panels

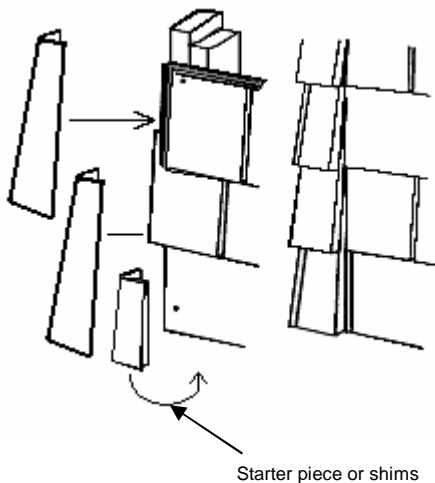
## FLUSH CORNERS:

Flush-mounting corner units are: pre-fabricated of No. 1 Grade Western Red Cedar shingles stapled to undercourse corners of overlapped 11/32" plywood. The Boston hip alternating lap corner construction is used (rather than mitered corners) where the corner overlap alternates with each course. Flush-mounting Corner units are manufactured and supplied in four different alternating widths (marked A,B,C,D) so that the vertical corner line is eliminated.



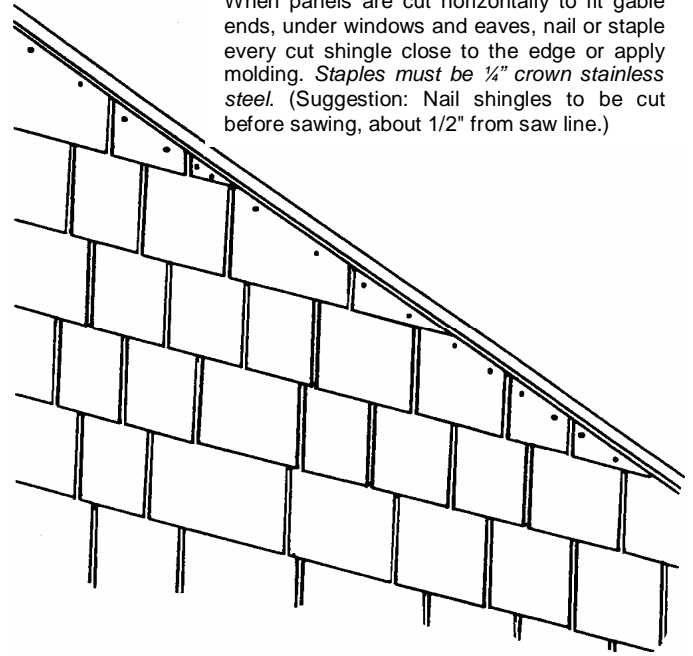
## ADD-ON CORNERS:

Add-on corner units are pre-fabricated of No. 1 Grade Western Red Cedar shingles using the Boston hip alternating lap corner construction with the alternating overlap. **One-course starter corners must be made on site for Add-on corners.**



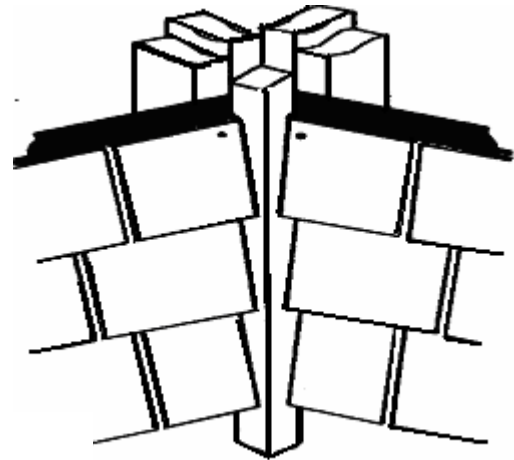
## ANGLE CUTS:

When panels are cut horizontally to fit gable ends, under windows and eaves, nail or staple every cut shingle close to the edge or apply molding. *Staples must be 1/4" crown stainless steel.* (Suggestion: Nail shingles to be cut before sawing, about 1/2" from saw line.)



## INSIDE CORNERS:

Nail a 1-1/2"x 1-1/2" wood strip into the inside corner and caulk sufficiently where the plywood backer will butt against it. Trim panel end square and set panel against the strip. **Use caution that caulk does not squeeze out onto face of panel!**



  
**CEDAR VALLEY**  
*Handcrafted Shingle Panels*