

1 Course Blind Nail

Hurricane Nailing Instructions



FIRST DETERMINE CORNER TYPE:

With Flush-mounting corners or corner board, install corner first. Double wrap corners with building paper. Use one Maze brand R-107-A nail per corner side, 1" down from top edge, centered on each side. Alternate the "left" and "right" corner units provided. Caulk corner plywood edges well. Trim panel end and push against caulked corner edge. Nail panel as per instructions below. (No starter course is needed.)

With Add-on corners, install all panels first, positioning so that panel ends are flush with corner without overlap. (Panel ends do not need to be trimmed.) Nail panel as per instructions below. Apply corners using one nail per corner side, 1" down from top course only. Add-on corners require starter pieces made on-site from individual shingles. Apply appropriate building paper under panels as per local code requirements. Double wrap corners.

PANEL APPLICATION:

Plan panel layout from lowest building corner after determining corner style to be used. Panels must be applied directly over nailable shear sheathing applied over studs, 16" O.C. A code approved building paper, must be applied directly behind the panels. Panels must span at least one stud spacing and vertical end joints must be staggered to join at studs. Horizontal scribed guidelines enable proper alignment of succeeding panels without measuring or leveling every panel.

NOTE: Panels do not meet shear requirements!

NAILING INSTRUCTIONS:

Use one **Maze** brand nail #R-107-A ring shank large headed galvanized nail every 16 inches on center. Nail the panels 1.5 inch down from the top STARTING ½ inch in from one edge and working across the panel. Never nail from both edges towards the middle. Each nail **MUST** hit the 2X4 stud or a second nail must be added. Nail head should be flush with the surface of the panel. There is no need to nail other areas unless the panel has been cut horizontally or diagonally (for window, door, gable, etc.), then the tops of each cut shingle must be stapled at the corners or secured with molding. Panel ends have to join on studs or rafters, and the nails holding panels must be driven into studs. **Maximum stud distance is 16 inches O.C. for this nailing pattern!**

Flush 90 Corners



Add-On 90 Corners

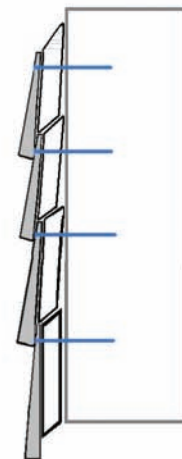
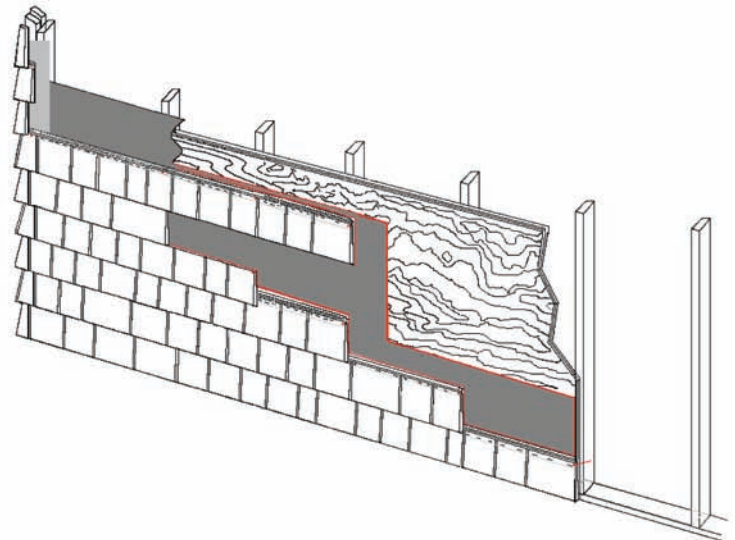


Figure 2

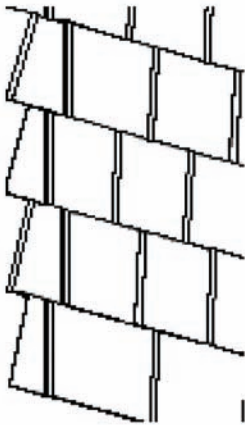
1 Course Blind Nail

Hurricane Nailing Instructions

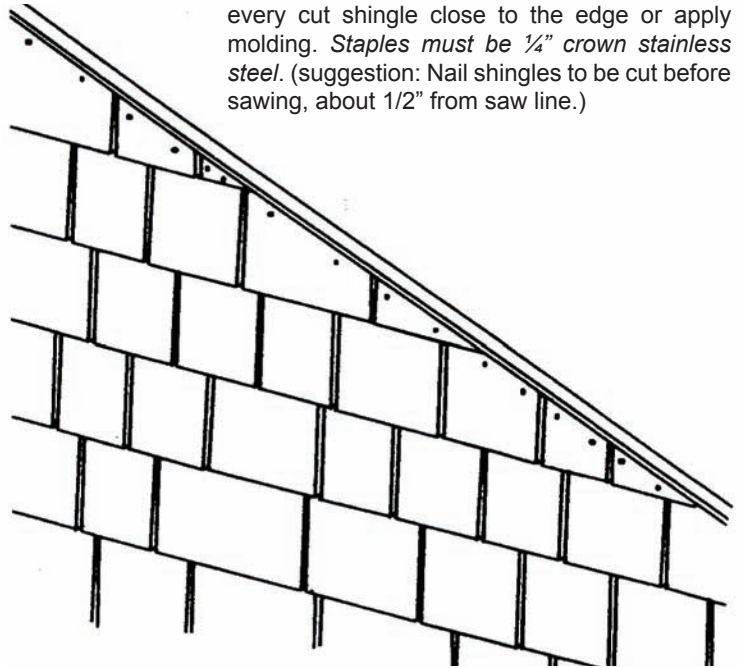


FLUSH CORNERS:

Flush-mounting corner units are pre-fabricated of No. 1 Grade Western Red Cedar shingles stapled to undercourse corners of overlapped 5/16" plywood. The Boston hip alternating lap corner construction is used (rather than mitered corners) where the corner overlap alternates with each course. Flush-mounting Corner units are manufactured and supplied in "left" and "right" alternating widths so that the vertical corner line is eliminated.

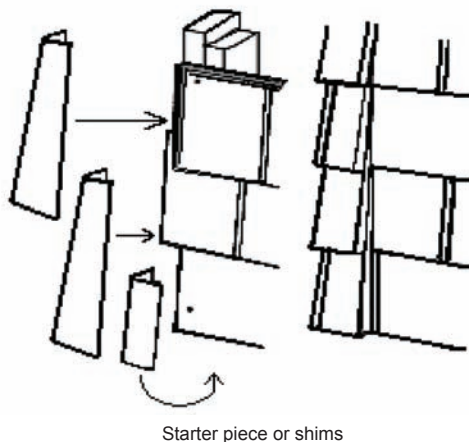


When panels are cut horizontally to fit gable ends, under windows and eaves, nail or staple every cut shingle close to the edge or apply molding. *Staples must be 1/4" crown stainless steel.* (suggestion: Nail shingles to be cut before sawing, about 1/2" from saw line.)



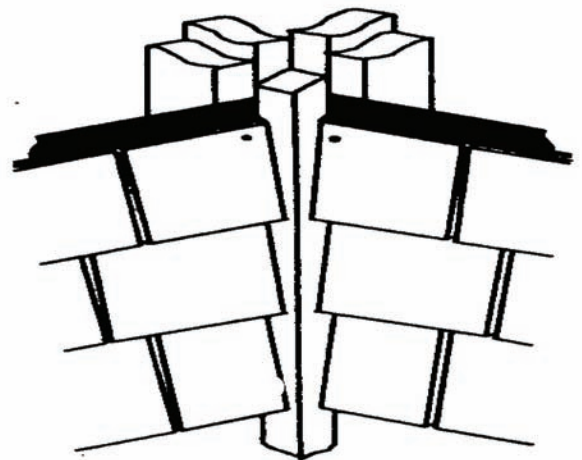
ADD-ON CORNERS:

Add-on corner units are pre-fabricated of No. 1 Grade Western Red Cedar shingles using the Boston hip alternating lap corner construction with the alternating overlap. **One-course starter corners must be made on site for Add-on corners.**



INSIDE CORNERS:

Nail a 1-1/2"x 1-1/2" wood strip into the inside corner and caulk sufficiently where the plywood backer will butt against it. Trim panel end square and set panel against the strip. **Use caution that caulk does not squeeze out onto face of panel!**




CEDAR VALLEY
Handcrafted Shingle Panels